

“Just try it, you’ll be amazed!” he said. And he was right.

Hypothesis

Intention can have an impact on water, which can improve plant growth. Specifically, symbols of love and pyramids can alter water to be beneficial toward life.

Setup

We used four identical glasses, each cleaned and rinsed before use. Two glasses were adorned with love, growth, and healing symbols and two glasses remained unaltered. Two PLA Russian pyramids (angle of 76.35°) were 3D printed to fit over the glasses. The pyramids were too large for the 3D printer, so they had to be reduced to fit, thus causing the pyramids to rest on the glasses, rising about ½” off the table. Each glass was washed and rinsed at the same time, using the same tap water. The water was then left to rest for one day to “activate” the water.

We setup four independent seed starter trays with 12 seed pods apiece. After the water had rested for one day the trays were filled with the same amount of water from each cup:

1. (Far left) control water.
2. (Second from left) pyramid water.
3. (Second from right) love water.
4. (Far right) love pyramid water.

After the pods were properly saturated with water, on 12/31/2022 the seeds were planted: left row with basil, right row with chives, two to three seeds each to increase the chances of germination. The tray lids were attached to retain as much moisture as possible and we waited.

Execution

Each day we checked the pods to confirm sufficient moisture and to keep an eye out for sprouting and measuring. It didn't take long. On day six the sprouts were visible for many of the pods. On the 12th day, some of the chives were growing so tall they were hitting the top of the tray lids, so the lids came off that day. Extra care was used to make sure the water didn't evaporate too quickly, and each pod remained sufficiently moist.

After the first watering, to saturate and expand the pods, the water was dumped out of each glass, glasses rinsed, and refilled all at the same time. It was observed that the glasses were not covered, thus the possibility of unintended contamination could occur. After refilling the glasses, they were each covered with just enough plastic wrap to cover the lid. The process of dumping, cleaning, and refilling the water was used again after the second watering.

Measuring the growth was a challenge. Some of the growth was through the sides of the pods. One of the pods was split and couldn't retain the same height as the others. Some of the chives broke during measuring. Some of the chives grew at angles, making a straight measurement difficult. The last measurement was taken on 1/17/2023.

Results

Visual representation of the plant growth shows obvious signs of altered water having a significant impact. The three altered watered trays show signs of more rapid growth, both vertically and horizontally, than the control tray.

Sprouts: Love pyramid has a clear win in this category with the most sprouts (10) and the fastest to eight and nine sprouts.

Height: Again, love pyramid is the winner with the tallest chives and tied with love for the tallest basil.

Growth Rate: This was a close race, but again, love pyramid wins with the fastest growth rate with chives and ties with love for the fastest growth rate for basil.

Conclusions

We were perfectly fine with accepting a mixed result in this experiment, as how can putting the same water in the same container and storage conditions be altered by surrounding objects: plastic and stickers? It doesn't make logical sense with the scientific understanding commonly held today. Pseudoscientists and woo-woo believers may more readily jump on board this train, but such a simple, reproducible experiment erased the doubts in our minds that there must be something to this. The experiment is far from over as we need to continue to observe the growth for a longer period. However, the almost 2-1/2 week results are strikingly clear. So... what do we do about it? Do we act like the fabled Dodo birds who taught each other how to fly, just to walk home?

- What does this mean for home gardening? Do we start watering our plants with water after having sat in a container with love/grow/heal stickers or under a pyramid, or both?
- What about our bodies, do we start drinking from containers in the same condition? Do we start placing pyramids around our homes?
- Can this be tested at larger scales to influence seeds, bottled water, or other food in general?



Environment Setup



Day 17 results



Day 12



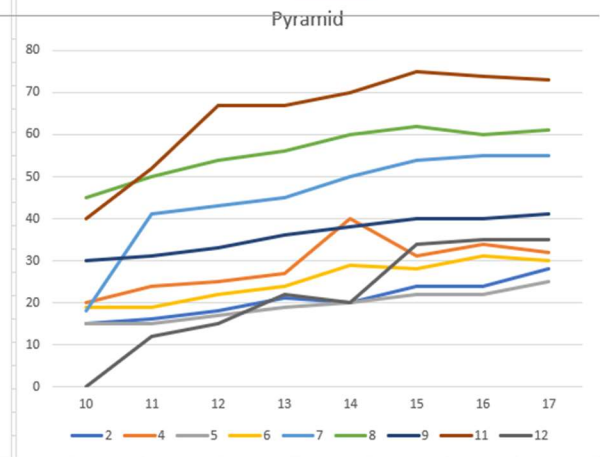
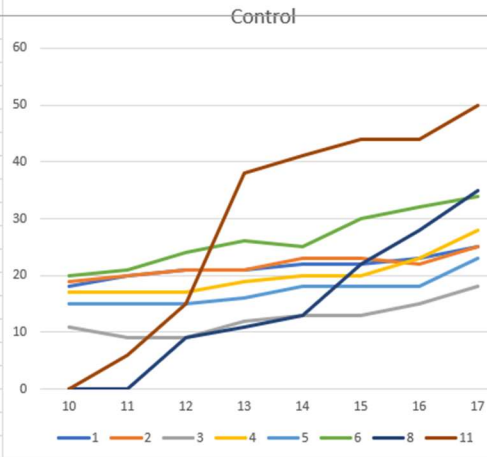
Day 16



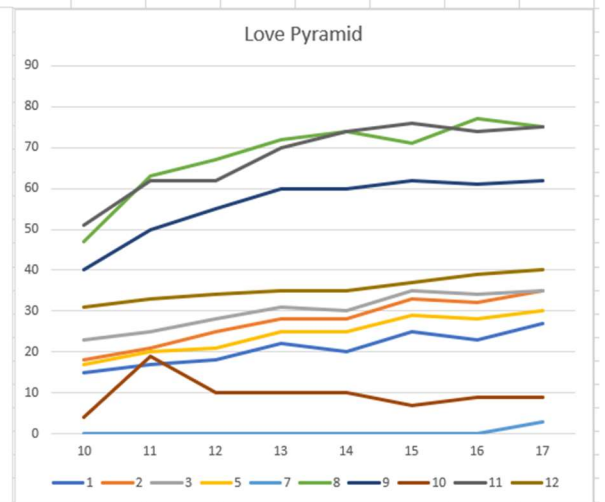
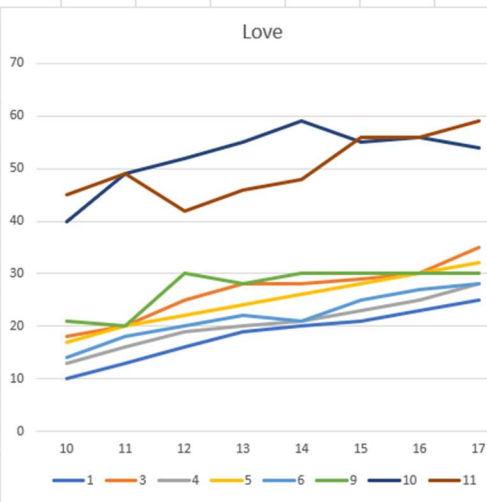
Day 17

Day:	1	2	3	4	5	6	7	8	9	10	11	12	13	14	15	16	17			
Height (mm)	12/31/2022				1/5/2023				1/10/2023				1/15/2023				Growth Rate			
1- Control	height/days since sprout																			
1						s				18	20	21	21	22	22	23	25			2.27
2						s				19	20	21	21	23	23	22	25			2.27
3							s			11	9	9	12	13	13	15	18			1.80
4					s					17	17	17	19	20	20	23	28			2.33
5					s					15	15	15	16	18	18	18	23			1.92
6					s					20	21	24	26	25	30	32	34			2.83
7																				
8									s		9	11	13		22	28	35			4.38
9																				
10																				
11									s		15	38	41	44	44	50				6.25
12																				
	Sprout count:				3	5	6	6	8											
2- Pyramid																				
1																				
2						s				15	16	18	21	20	24	24	28			2.55
3																				
4					s					20	24	25	27	40	31	34	32			2.67
5					s					15	15	17	19	20	22	22	25			2.08
6					s					19	19	22	24	29	28	31	30			2.50
7							s			18	41	43	45	50	54	55	55			6.11
8							s			45	50	54	56	60	62	60	61			6.78
9							s			30	31	33	36	38	40	40	41			4.10
10																				
11						s				40	52	67	67	70	75	74	73			6.64
12										12	15	22	20	34	35	35				5.00
	Sprout count:				3	5	6	8	8	9										
3- Love																				
1						s				10	13	16	19	20	21	23	25			2.27
2																				
3					s					18	20	25	28	28	29	30	35			2.92
4						s				13	16	19	20	21	23	25	28			2.55
5					s					17	20	22	24	26	28	30	32			2.67
6					s					14	18	20	22	21	25	27	28			2.33
7																				
8																				
9										21	20	30	28	30	30	30	30			3.75
10										40	49	52	55	59	55	56	54			6.75
11						s				45	49	42	46	48	56	56	59			4.92
12																				
	Sprout count:				4	6	6	6	8											
4- Love Pyramid																				
1							s			15	17	18	22	20	25	23	27			2.70
2						s				18	21	25	28	28	33	32	35			2.92
3						s				23	25	28	31	30	35	34	35			2.92
4																				
5						s				17	20	21	25	25	29	28	30			2.50
6																				
7															s	3				1.00
8						s				47	63	67	72	74	71	77	75			6.25
9						s				40	50	55	60	60	62	61	62			5.64
10						s				4	19	10	10	10	7	9	9			0.82
11						s				51	62	62	70	74	76	74	75			6.82
12						s				31	33	34	35	35	37	39	40			3.33
	Sprout count:				5	8	9	9	9	9	9	9	9	9	9	10				

	10	11	12	13	14	15	16	17
1	18	20	21	21	22	22	23	25
2	19	20	21	21	23	23	22	25
3	11	9	9	12	13	13	15	18
4	17	17	17	19	20	20	23	28
5	15	15	15	16	18	18	18	23
6	20	21	24	26	25	30	32	34
8	0	0	9	11	13	22	28	35
11	0	6	15	38	41	44	44	50



	10	11	12	13	14	15	16	17
2	15	16	18	21	20	24	24	28
4	20	24	25	27	40	31	34	32
5	15	15	17	19	20	22	22	25
6	19	19	22	24	29	28	31	30
7	18	41	43	45	50	54	55	55
8	45	50	54	56	60	62	60	61
9	30	31	33	36	38	40	40	41
11	40	52	67	67	70	75	74	73
12	0	12	15	22	20	34	35	35



	10	11	12	13	14	15	16	17
1	15	17	18	22	20	25	23	27
2	18	21	25	28	28	33	32	35
3	23	25	28	31	30	35	34	35
5	17	20	21	25	25	29	28	30
7	0	0	0	0	0	0	0	3
8	47	63	67	72	74	71	77	75
9	40	50	55	60	60	62	61	62
10	4	19	10	10	10	7	9	9
11	51	62	62	70	74	76	74	75
12	31	33	34	35	35	37	39	40

